

HE8XRT



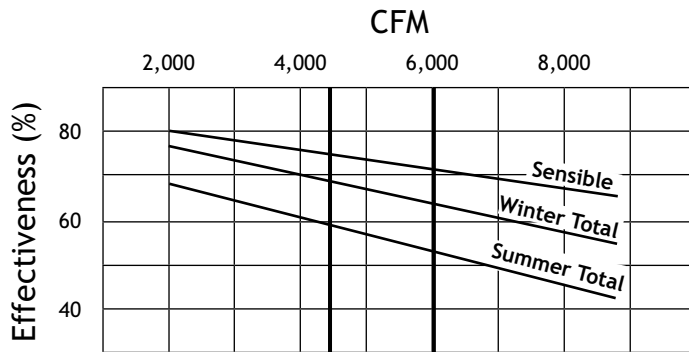
Outdoor Unit



Specifications

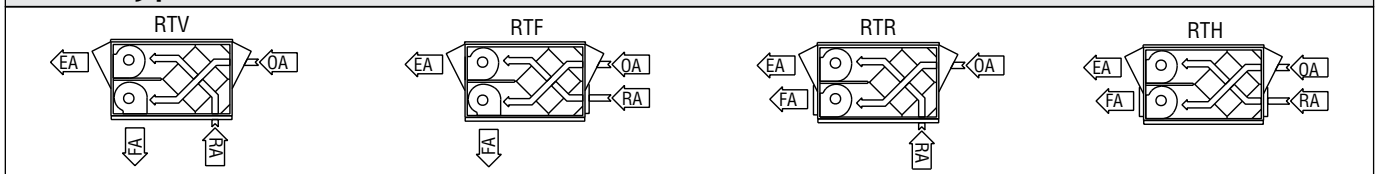
Ventilation Type: Static Plate, Heat and Humidity Transfer						
Typical Airflow Range: 2,000-8,000 CFM						
AHRI 1060 Certified Core: Eight L125-00						
Airflow Rating Points (for AHRI): 6,000 CFM and 4,500 CFM						
Number Motors: Two						
HP	Volts	HZ	Phase	FLA	Min. Cir. Amps	Max. Fuse Size
5	208-230	60	Three	14.2-13.0	32.6	45
	460	60	Three	6.5	14.9	20
	575	60	Three	5.0	11.3	15
7.5	208-230	60	Three	20.9-19.2	47.0	70
	460	60	Three	9.6	21.6	30
	575	60	Three	7.6	17.1	25
10	208-230	60	Three	29.0-26.8	65.3	90
	460	60	Three	13.4	30.2	45
	575	60	Three	10.0	22.5	35
Control Voltage: 24 VAC						
Filters: Sixteen total, MERV 8, 2" pleated, 20" x 20" nominal size						
Weight: 2,730 lbs (unit), 3,080 lbs (shipping weight)						
Shipping Dimensions: 85" W x 114" L x 85" H						

G5 Performance



*At AHRI 1060 standard conditions
(See certified data on page 67 for core components).

Base Type/Airflow Orientations

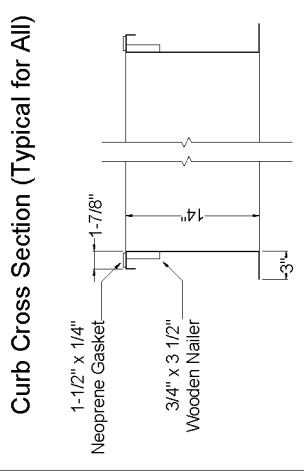


Airflow Performance

Motor HP	Blower RPM Nominal	Turns Open	External Static Pressure (Inches Water Column)													
			0.0		0.25		0.5		0.75		1.0		1.25		1.5	
			CFM	BHP	CFM	BHP	CFM	BHP	CFM	BHP	CFM	BHP	CFM	BHP	CFM	BHP
5	1,460	4.5	5,575	3.2	5,425	3.2	5,200	3.2	5,000	3.2	4,775	3.1	4,550	3.0	4,270	2.9
	1,610	2	6,200	4.3	6,010	4.3	5,875	4.2	5,700	4.2	5,500	4.2	5,325	4.1	5,125	4.1
	1,725	0.5	6,550	5.0	6,380	5.0	6,210	5.0	6,100	5.0	5,880	4.9	5,730	4.8	5,510	4.8
7.5	1,560	4.5	6,000	3.9	5,850	3.9	5,650	3.8	5,475	3.8	5,275	3.8	5,100	3.7	4,875	3.7
	1,740	2	6,700	5.3	6,575	5.3	6,400	5.3	6,300	5.3	6,125	5.3	5,950	5.2	5,750	5.2
	1,865	0	-	-	-	-	-	-	6,800	7.5	6,675	7.5	6,500	7.5	6,375	7.4
10	1,810	4.5	7,000	6.1	6,875	6.1	6,750	6.1	6,600	6.0	6,425	6.0	6,275	6.0	6,100	5.9
	2,020	2	7,850	8.5	7,745	8.5	7,625	8.5	7,450	8.4	7,350	8.4	7,200	8.3	7,050	8.3
	2,105	1	-	-	-	-	7,950	9.6	7,800	9.6	7,725	9.6	7,600	9.5	7,450	9.5

HESXRT UNIT DIMENSIONS

EA: Exhaust Air to outdoors
 OA: Outdoor Air Intake
 RA: Room Air to be exhausted
 FA: Fresh Air to inside

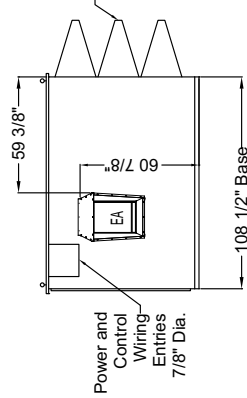
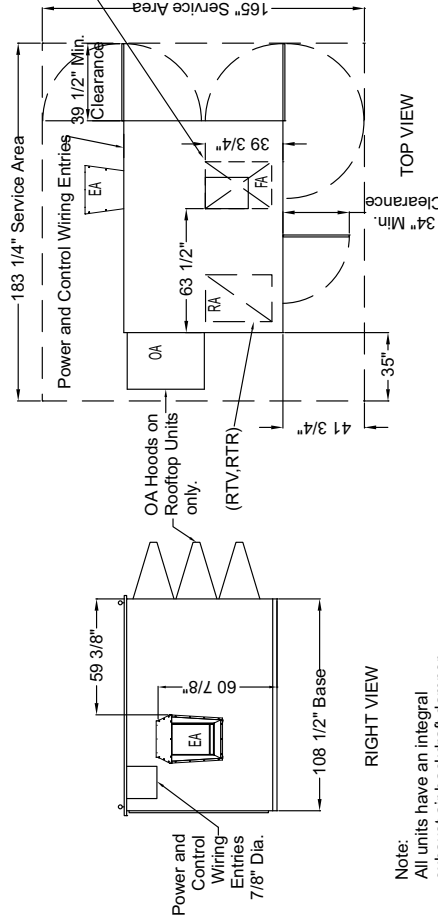


RTV, RTF UNITS ONLY:
 FA Blower Outlet is 16" x 22".
 Curb accepts up to 24" x 36" duct;
 see separate Curb drawing.

Front Views @ 0.5X:
 BLOWER ROTATION

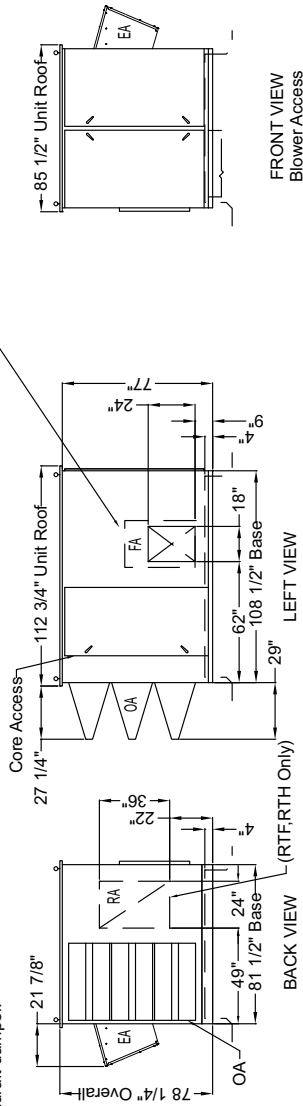


RTH, RTR UNITS ONLY:
 FA Blower Outlet is 18" x 24".
 24" x 36" Duct Flange is also supplied.
 Field install only in location shown.



RIGHT VIEW

Note:
 All units have an integral
 exhaust air backdraft damper.



FRONT VIEW
 Blower Access

LEFT VIEW

CURB8X

