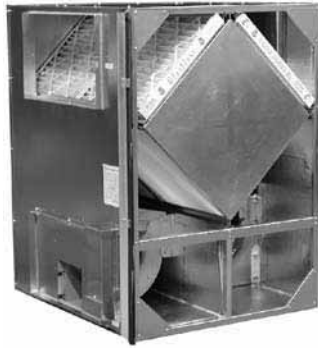


HE2XINV



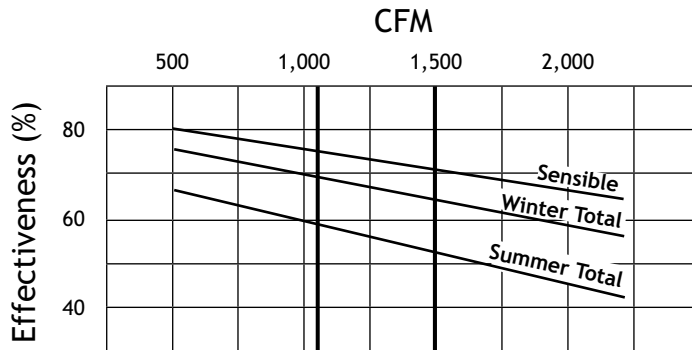
Indoor Unit



Specifications

Ventilation Type: Static Plate, Heat and Humidity Transfer						
Typical Airflow Range: 500-2,000 CFM						
AHRI 1060 Certified Core: Two L125-00						
Airflow Rating Points (for AHRI): 1,500 CFM and 1,120 CFM						
Number Motors: Direct Drive (DD) Four, Belt Drive (BD) Two						
Drive HP	Volts	HZ	Phase	FLA	Min. Cir. Amps	Max. Fuse Size
DD 0.75	115	60	Single	8.6	36.6	45
	208-230	60	Single	4.3	18.3	20
	277	60	Single	2.4	10.2	15
	208-230	60	Three	2.1	9.8	15
460	60	60	Three	1.1	4.9	15
	208-230	60	Single	9.3-9.0	20.9	30
	208-230	60	Three	4.8-4.8	10.8	15
	460	60	Three	2.4	5.4	15
575	60	60	Three	1.8	4.1	15
	208-230	60	Single	11.3-10.5	25.4	35
	208-230	60	Three	6.2-6.2	14.0	20
	460	60	Three	3.1	7.0	15
575	60	60	Three	2.3	5.2	15
	Control Voltage: 24 VAC					
	Filters: Four total, MERV 8, 2" pleated, 20" x 20" nominal size					
	Weight: 399 lbs (unit), 420 lbs (shipping weight)					
Shipping Dimensions: 48" W x 62" L x 55" H						

G5 Performance



*At AHRI 1060 standard conditions
(See certified data on page 67 for core components.)

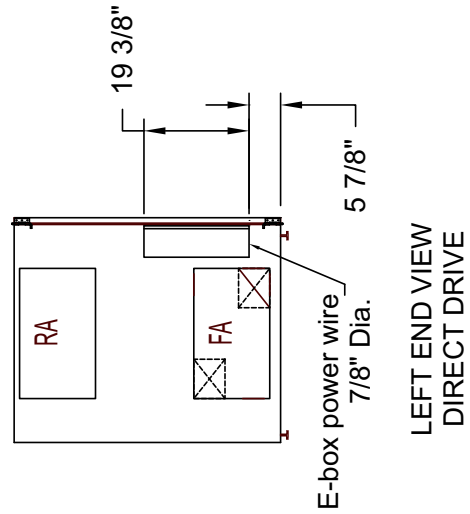
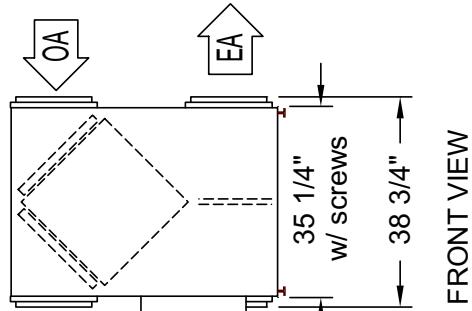
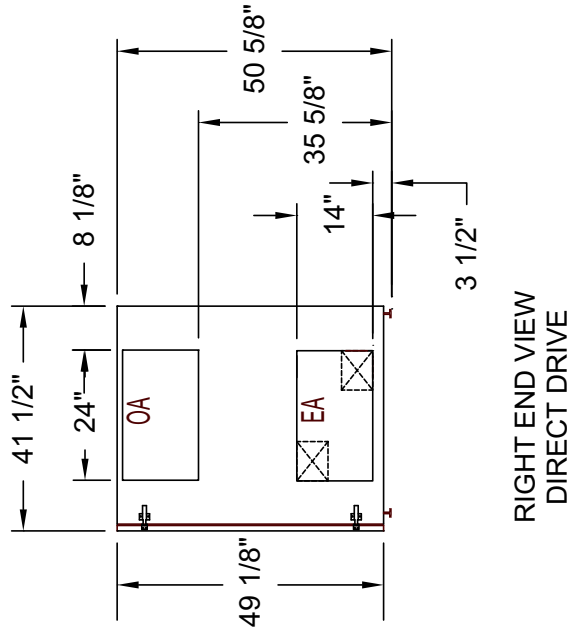
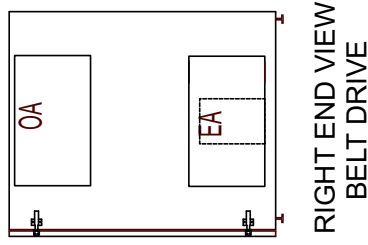
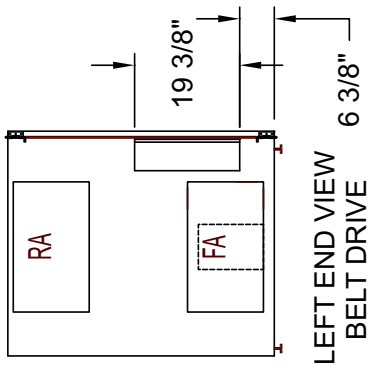
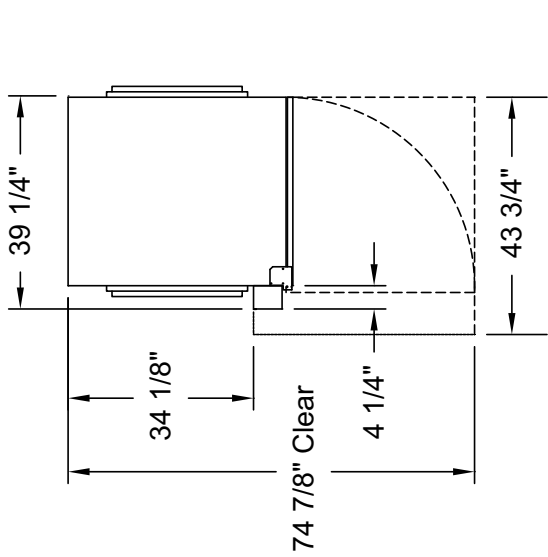
Airflow Performance

Motor HP	Blower RPM Nominal	Turns Open	External Static Pressure (Inches Water Column)												
			0.0		0.25		0.5		0.75		1.0		1.25		1.5
0.75 (Four DD) Single Phase	N/A	N/A	1,870 CFM	1,720 CFM	1,520 CFM	1,290 CFM	1,080 CFM	700 CFM	-	-	-	-	-	-	-
	N/A	N/A	2,160 Watts	2,070 Watts	1,900 Watts	1,715 Watts	1,505 Watts	1,210 Watts	-	-	-	-	-	-	-
0.75 (Four DD) Three Phase	N/A	N/A	1,870 CFM	1,720 CFM	1,540 CFM	1,350 CFM	1,240 CFM	1,030 CFM	800 CFM	-	-	-	-	-	
	N/A	N/A	2,500 Watts	2,300 Watts	2,125 Watts	1,950 Watts	1,730 Watts	1,490 Watts	1,240 Watts	-	-	-	-	-	
1.5 (BD)	1,000	4.5	1,378 CFM	1,175 CFM	900 CFM	635 CFM	-	-	-	-	-	-	-	-	
	1,230	2	1,694 CFM	1,550 CFM	1,335 CFM	1,125 CFM	1,000 CFM	500 CFM	-	-	-	-	-		
	1,420	0	1,956 CFM	1,850 CFM	1,680 CFM	1,475 CFM	1,300 CFM	1,200 CFM	930 CFM	-	-	-	-		
2 (BD)	1,220	4.5	1,681 CFM	1,530 CFM	1,315 CFM	1,100 CFM	975 CFM	430 CFM	-	-	-	-	-		
	1,470	2	2,025 CFM	1,925 CFM	1,750 CFM	1,575 CFM	1,375 CFM	1,275 CFM	1,125 CFM	-	-	-	-		
	1,660	0	-	-	2,000 CFM	1,900 CFM	1,750 CFM	1,570 CFM	1,475 CFM	1,125 CFM	1,125 CFM	1,475 CFM	1.7		

Note: Brake Horse Power (BHP) is for one blower motor package only.

HE2XIN V UNIT DIMENSIONS

EA: Exhaust Air to outdoors
 OA: Outdoor Air Intake
 RA: Room Air to be exhausted
 FA: Fresh Air to inside



Note: All duct flanges are 14" x 24".