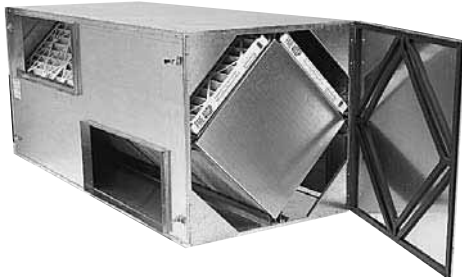


CA-SERIES



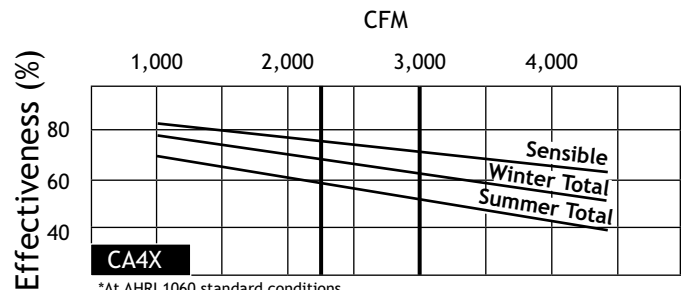
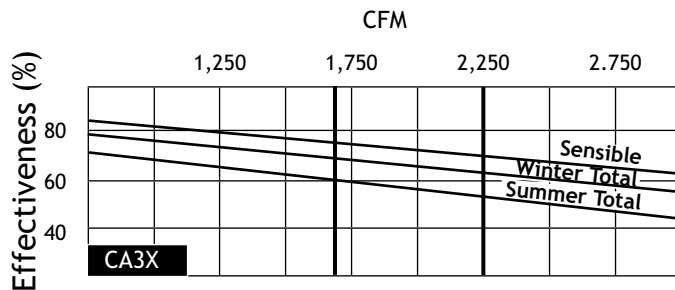
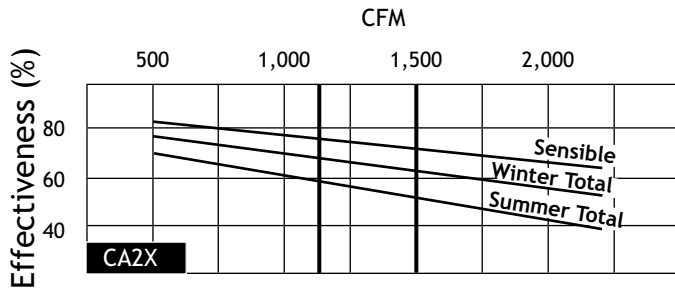
Indoor Unit - Up to 20,000 CFM in Stacked Arrays



Specifications

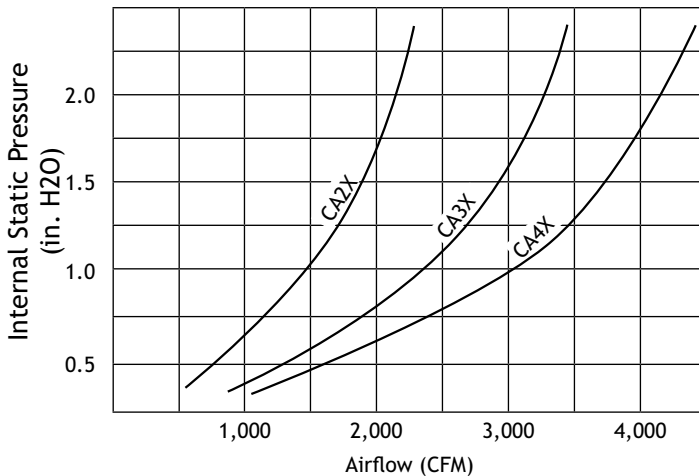
Ventilation Type: Static Plate, Heat and Humidity Transfer			
Insulated sheet metal cabinets with energy exchange cores and filters.			
Individual CA-Series units or stacks of units can be built into larger air handling systems.			
Blower not included and must be specified to meet job requirements.			
Description	CA2X	CA3X	CA4X
Typical Airflow Range CFM	500-2,200	750-3,300	1,000-4,400
AHRI 1060 Certified Core	Two L125-00	Three L125-00	Four L125-00
Airflow Rating Points (for AHRI)	1,500 and 1,120 CFM	2,250 and 1,690 CFM	3,000 and 2,250 CFM
Unit Weight	225 lbs	325 lbs	400 lbs
Shipping Weight	275 lbs	375 lbs	475 lbs
Filters: MERV 8, 2" pleated 20" x 20" nominal size	Four Total	Six Total	Eight Total
Shipping Dimensions: CA2X - 40" W x 48" L x 41" H CA3X - 40" W x 67" L x 41" H CA4X - 40" W x 87" L x 41" H			
Insulation: One inch, high density, FSK faced, fiberglass			

G5 Performance



*At AHRI 1060 standard conditions
(See certified data on page 66 for core components).

Airflow Performance

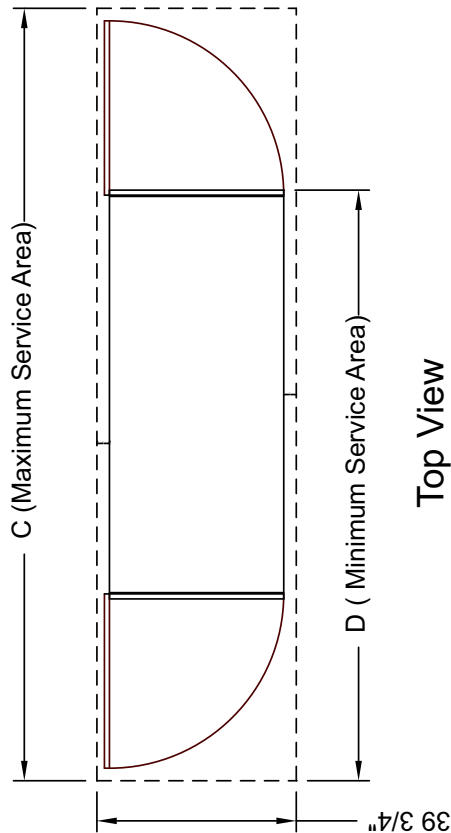


CA-SERIES UNIT DIMENSIONS

	CA2X	CA3X	CA4X
A	42"	62"	81-5/8"
B	14"	24"	32"
C	111"	130"	149"
D	77"	96"	116"
E	5-5/8"	5-5/8"	7-5/8"
F	19-3/4"	29-5/8"	39-3/4"

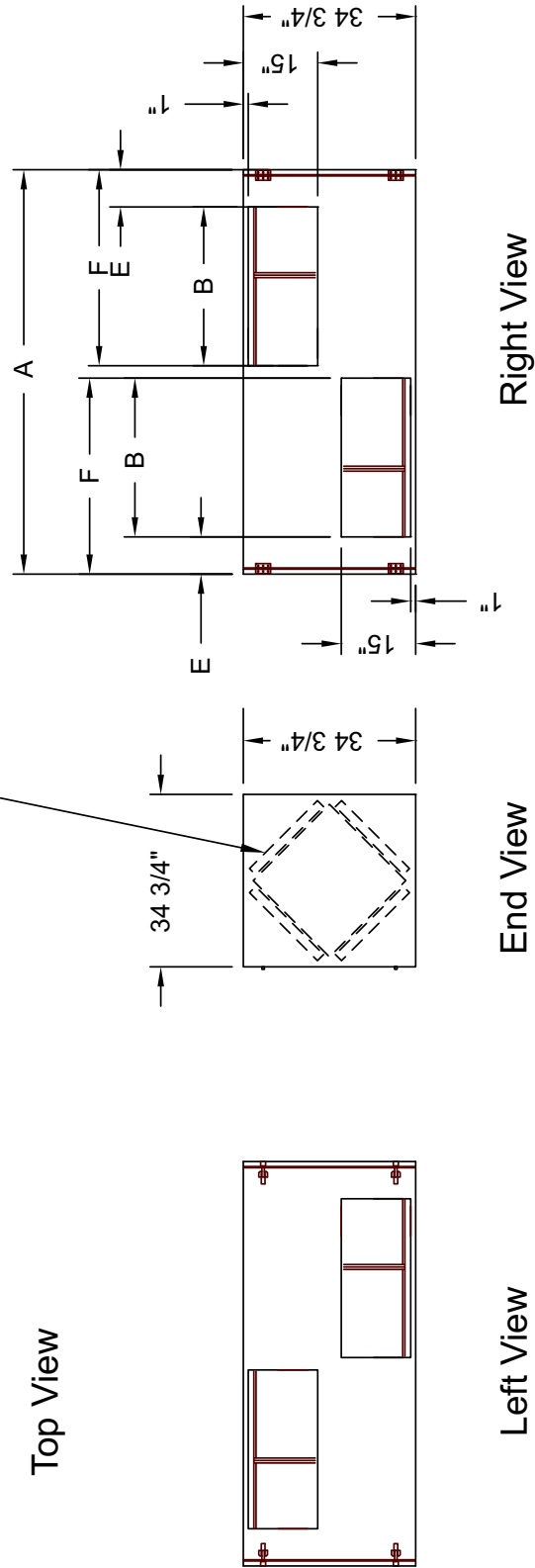
Available Options:
Double Wall Construction

EA: Exhaust Air to outdoors
OA: Outdoor Air Intake
RA: Room Air to be exhausted
FA: Fresh Air to inside



Top View

Note: Filters are provided for installation in any two of the locations shown, depending on which duct connections are selected for inlets.
Filters are 2" x 20" x 20" pleated disposable.



Left View

End View

Right View